

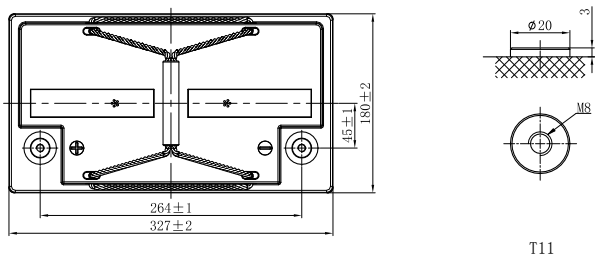
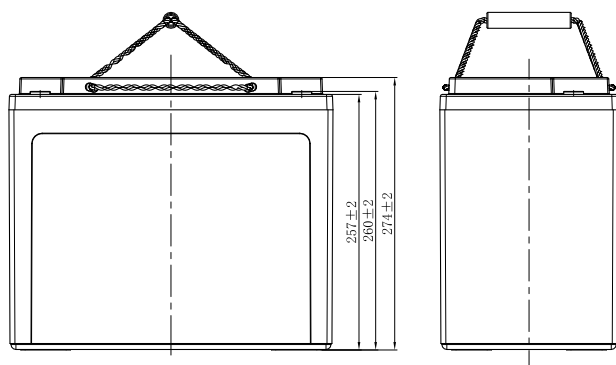
SUPERIOR DEEP CYCLE AGM BATTERY

LDC12-135 (12V135Ah)



CHARACTERISTICS

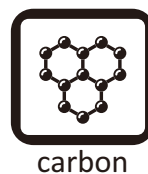
Item		Specifications
Voltage		12V
Dimension	Length	327mm (12.9inches)
	Width	180mm (7.09inches)
	Container Height	274mm (10.8inches)
	Total Height	274mm (10.8inches)
Approx Weight		37.7kg (83.1lbs)
Terminal		T11(M8)
Container Material		ABS
Capacity	20HR	135Ah
	10HR	126Ah
	5HR	115Ah
Operating Temp. Range	Discharge	-20~55°C (-4~131°F)
	Charge	0~40°C (32~104°F)
	Storage	-15~40°C (5~104°F)



T11

APPLICATIONS

- Electric vehicle
- Golf cart
- Sightseeing
- Cleaning equipment
- AWP
- Mobility



Note: Terminal Torque Values in-lb(Nm):97.28-130.0(11.0-14.7)



SUPERIOR DEEP CYCLE AGM BATTERY

LDC12-135 (12V135Ah)



GENERAL FEATURES

Stable initial capacity

- PAM/NAM amount optimization
- 4BS crystal paste mixing & curing technology
- Double layer separator technology
- Improved design electrolyte S.G.

Less water loss

- PAM/NAM amount optimization
- New PAM/NAM recipe introduced
- Rare earth alloy

Solve NAM sulphation

- Carbon boost technology
- Pre-sulfate technology

Improved PSoC cycling

- Carbon boost technology
- Mix carbon boost technology
- Targeting for higher level through carbon technology

Delay PAM softening and shedding

- Plate assembly pressure re-engineering
- 4BS crystal paste mixing & curing technology
- Higher paste density

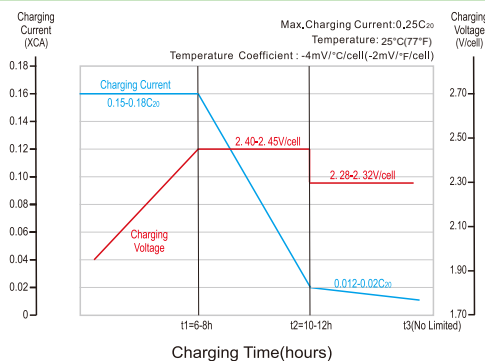
Optimize electrolyte stratification

- Introduce AGM-GEL technology

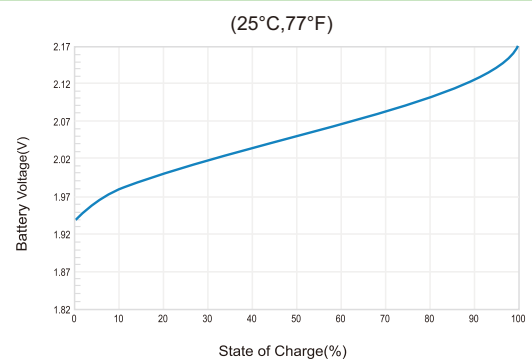
Excellent deep cycle performance

- Plate assembly pressure re-engineering
- New PAM/NAM recipe introduced
- Gel electrolyte technology
- Rare earth alloy
- Double layer separator technology
- Lower acid filling temperature

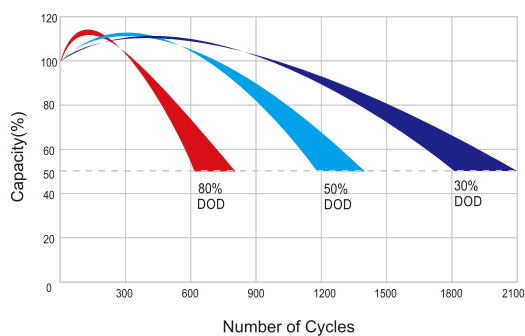
Charging Profiles



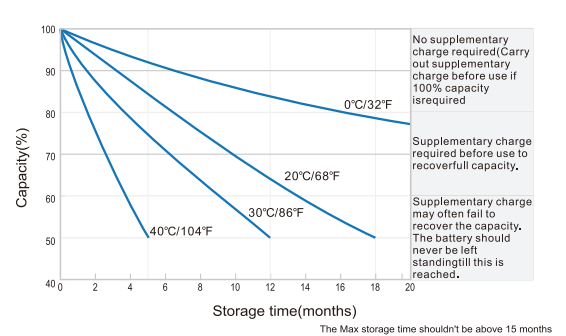
Relationship of OCV and State Of Charge



Cycle Life in Relation to Depth Of Discharges



Self-discharge Characteristics



Leoch International Technology Ltd.
www.leoch.com

Leoch Batteries Pte Ltd
www.leoch.sg

Leoch Battery Corporation
www.leochamericas.com

Leoch Europe S.A.
www.leoch.eu