



LPCG12-140 (12V 140Ah)

Specifications

Rated Voltage	12V	
Nominal Capacity	140Ah (C ₂₀ 1.80V/cell)	
Dimensions	Length 483 mm	
	Width 170 mm	
	Container Height 239 mm	
	Total Height 239 mm	
Approx. Weight	43.9 Kg (96.8lbs)	
Terminal	T11	
Layout	1	
Container material	ABS	
Rated Capacity (25°C)	140.0Ah	(20hr, 7.00A, 1.80V/cell)
	135.0Ah	(10hr, 13.5A, 1.75V/cell)
	108.0Ah	(5hr, 21.6A, 1.75V/cell)
	97.8Ah	(3hr, 32.6A, 1.75V/cell)
	74.3Ah	(1hr, 74.3A, 1.67V/cell)
Max. Discharge Current	1260A (5s)	
Internal Resistance (25°C)	Approx 4.20mΩ	
Operating Temp. Range	Discharge: -20°C ~55°C (-4~131°F)	
	Charge: 0°C ~40°C (32~104°F)	
	Storage: -20°C ~50°C (-4~122°F)	
Nominal Operating Temp. Range	25±3°C (77±5 °F)	
Cycle Use	Initial Charging Current less than 33.75A. Voltage 14.4V~14.7V at 25 °C(77 °F)Temp. Coefficient -30mV/ C	
Standby Use	Initial Charging Current less than 33.75A. Voltage 13.5V~13.8V at 25 °C(77 °F)Temp. Coefficient -20mV/ C	
Effect Of Temp. To Capacity	40°C (104°F)	103%
	25°C (77°F)	100%
	0°C (32°F)	86%
Self Discharge	LPCG series batteries may be stored for up to 9 months at 25 °C (77 °F) and then a freshening charge is required. For higher temperatures the time interval will be shorter.	



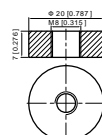
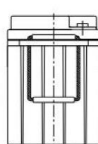
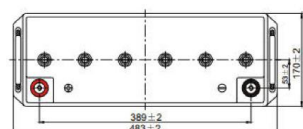
Description and Features

The LPCG Series gel batteries are specially designed for deep cyclic use. These gel batteries are completely sealed and therefore 100% maintenance free and leak-proof. The powerful and stable gel batteries offer a long service life and are suitable for deep cycle applications. Available in a range of 12V batteries from 30Ah to 200Ah.

Features

- Gel technology
- More resistant to deep discharge and higher temperatures
- Long service life – 50% more cycles than VRLA AGM
- Suitable for extreme (deep) cycle applications

Layout



Terminal

UL certification

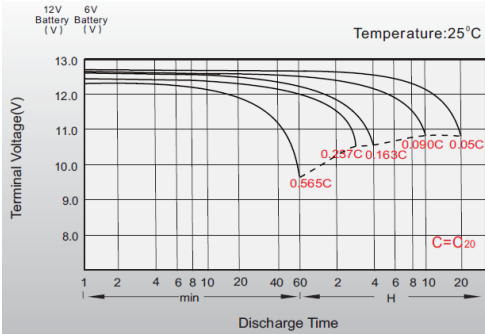
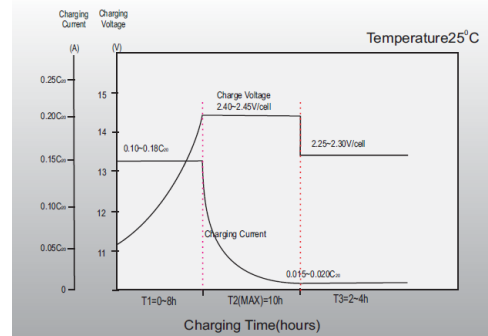
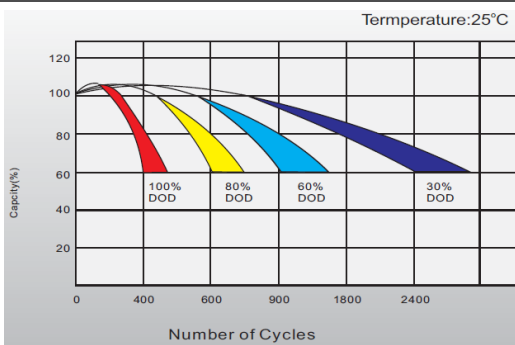
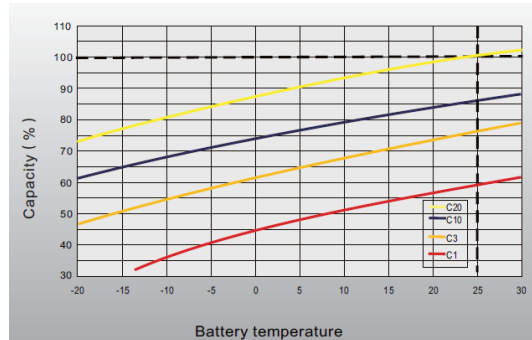


Constant Current Discharge (Amperes) At 25°C (77°F)

F.V/Time	1 Hr	2 Hr	3 Hr	4 Hr	5 Hr	6 Hr	8 Hr	10 Hr	20 Hr
1.85V/cell	57.2	36.3	27.7	22.9	19.8	17.1	13.6	11.8	6.73
1.80V/cell	63.2	39.3	29.7	24.3	20.8	17.9	14.3	12.3	7.00
1.75V/cell	67.6	41.6	31.3	25.4	21.6	18.6	14.7	13.5	7.17
1.67V/cell	74.3	45.3	33.7	26.9	22.7	19.5	15.4	13.8	7.32
1.60V/cell	78.8	47.1	35.0	27.9	23.4	20.0	15.7	14.0	7.43

Constant Power Discharge (Watts/Cell) At 25°C (77°F)

F.V/Time	1 Hr	2 Hr	3 Hr	4 Hr	5 Hr	6 Hr	8 Hr	10 Hr	20 Hr
1.85V/cell	111.4	71.0	54.2	45.1	39.1	33.8	27.1	23.5	12.9
1.80V/cell	122.4	76.4	57.9	47.6	40.9	35.4	28.4	24.5	13.5
1.75V/cell	130.3	80.8	61.0	49.7	42.4	36.5	29.2	25.0	13.7
1.67V/cell	141.4	87.0	65.1	52.3	44.3	38.2	30.4	25.8	14.0
1.60V/cell	149.4	90.0	67.4	54.1	45.6	39.0	30.89	26.25	14.2

**Discharge Characteristics****Charging Characteristics****Cycle Life In Relation To Depth Of Discharge****Temperature Effects In Relation To Battery Capacity****Applications**

- Electrically powered wheelchair
- Vehicle in place of walking
- Lawn-mower
- Golf trolleys and golf cart
- Railway and marine systems

General Features

- Special plate design, long cycle life
- ≥ 600 Cycles @ 80%DOD
- Operation temperature - $20 \sim 55^{\circ}\text{C}$
- $\leq 2\%$ Self discharge per month
- Good deep discharge resilience performance

Standards

- IEC 60896 Certified
- Classified as "Long Life" according to Eurobat
- UL Certified
- IATF16949, ISO 9001, ISO 14001 and OHSAS 18001 certified production facilities

(Note) All above information shall be changed without prior notice, Landport Batteries reserves the right to explain and update the latest information.