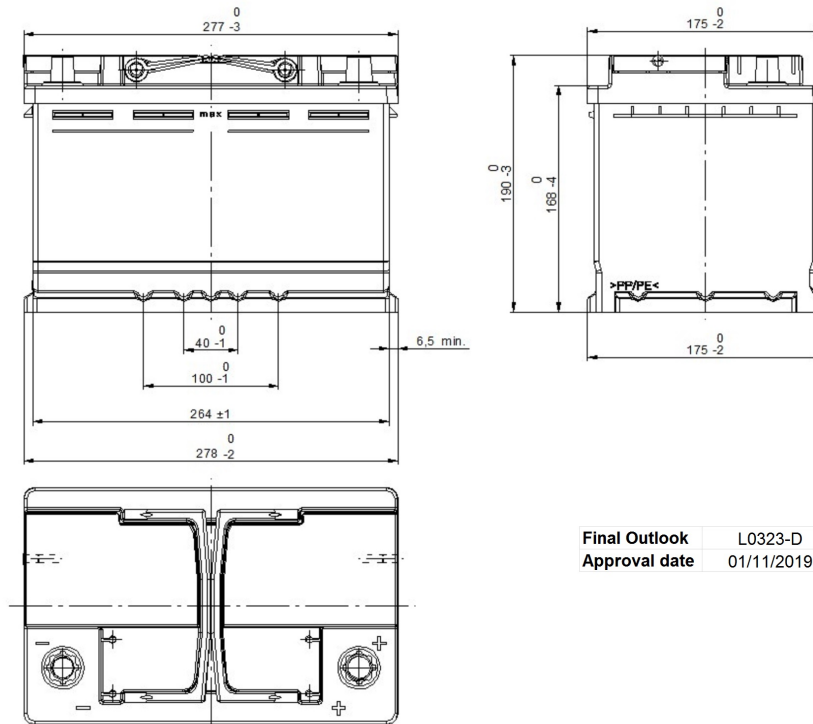


Central Article Code: L03078C23-D
 Local Code: EA770

Created: 24/02/2020
 Modified: 07/02/2022



PERFORMANCES		CONTAINER			
Voltage (V):	12 V	Type:	L03	BLACK	
C20 (Ah):	77.0 20 h	Hold Down:	B13		
Cranking (A):	760 EN	H.D. Adapter:	No		
Charge:	WET	COVER			
Technology:	Vented/Flooded	Type:	Double with Integrat BLACK		
Grid:	Ca/Ca	Polarity:	ETN 0		
Vibration:	V1 (30Hz+/-2Hz/3g/2h)	Terminals:	EN taper post		
Endurance:	E2 (90 cycles@50%)	Terminal Adapter:	No		
STD. DIMENSIONS		SOCI:	No		
Length (mm ± 2):	278	Ventilation:	Central		
Width (mm ± 2):	175	Filter:	2 Filters		
Height (mm ± 2):	190	Lateral Plug:	Standard	Left side	BLACK
Total Weight (kg ± 5%):	17.50	PLUGS			
		Type:	1 x Vent Sealed PSL-OE ha BLACK		
		HANDLES			
		Type:	2 x PSL OE Integrated BLACK		
		OTHERS			
		Degassing Tube:	No		

All figures show nominal values. Tolerances are according to EN50342 and applicable European Regulations.